

COMMITTEE OF THE WHOLE DECEMBER 8, 2003

SIGN VARIANCE APPLICATION

FILE NO.: SV.03-23

OWNER: VALLEY MILLS DEVELOPMENT INC.

LOCATION: 3737 RUTHERFORD ROAD, PART 2/LOT 15, CONCESSION 5

Recommendation

The Sign Variance Committee recommends:

That Sign Variance Application SV.03-23, Valley Mills Development Inc, be APPROVED.

Purpose

Applicant is requesting to place two (2) additional fascia signs on building that were not part of the original site plan agreement registered on title.

Background - Analysis and Options

By-Law Requirements (203-92, as amended)

Section 6.2 Compliance with Site Development Agreements.

Conclusion

Applicant is requesting to place one (1) sign on the west elevation measuring 5.48m² and one (1) additional graphic panel sign on the north elevation measuring 10.83m².

Attachments

1. Sketch of Sign

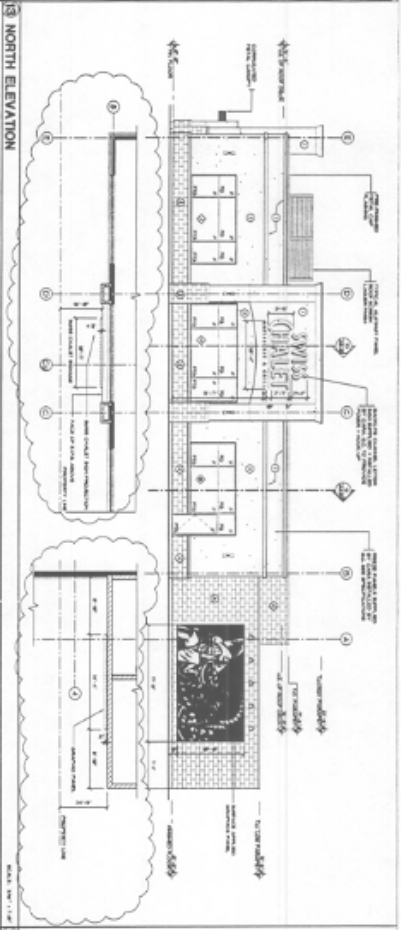
Report prepared by:

John Studdy, Manager of Customer & Administrative Services

Respectfully submitted,

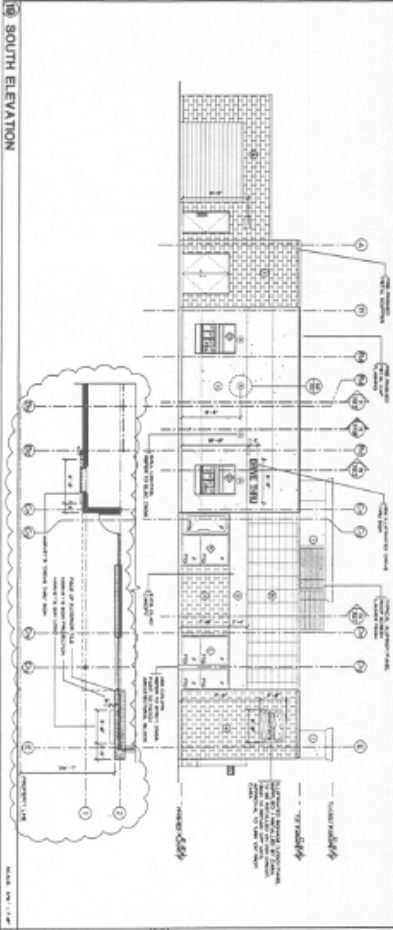
John Studdy
Chair, Sign Variance Committee

/as



17 SIGN AREA CALC.

1. SIGN AREA CALCULATED BY THE ARCHITECT PER THE FOLLOWING PER
 2. THE SIGN AREA CALCULATED BY THE ARCHITECT PER THE FOLLOWING PER
 3. THE SIGN AREA CALCULATED BY THE ARCHITECT PER THE FOLLOWING PER
 4. THE SIGN AREA CALCULATED BY THE ARCHITECT PER THE FOLLOWING PER
 5. THE SIGN AREA CALCULATED BY THE ARCHITECT PER THE FOLLOWING PER
 6. THE SIGN AREA CALCULATED BY THE ARCHITECT PER THE FOLLOWING PER
 7. THE SIGN AREA CALCULATED BY THE ARCHITECT PER THE FOLLOWING PER
 8. THE SIGN AREA CALCULATED BY THE ARCHITECT PER THE FOLLOWING PER
 9. THE SIGN AREA CALCULATED BY THE ARCHITECT PER THE FOLLOWING PER
 10. THE SIGN AREA CALCULATED BY THE ARCHITECT PER THE FOLLOWING PER
 11. THE SIGN AREA CALCULATED BY THE ARCHITECT PER THE FOLLOWING PER
 12. THE SIGN AREA CALCULATED BY THE ARCHITECT PER THE FOLLOWING PER
 13. THE SIGN AREA CALCULATED BY THE ARCHITECT PER THE FOLLOWING PER
 14. THE SIGN AREA CALCULATED BY THE ARCHITECT PER THE FOLLOWING PER
 15. THE SIGN AREA CALCULATED BY THE ARCHITECT PER THE FOLLOWING PER



18 GENERAL NOTES

1. GENERAL NOTES
2. GENERAL NOTES
3. GENERAL NOTES
4. GENERAL NOTES
5. GENERAL NOTES
6. GENERAL NOTES
7. GENERAL NOTES
8. GENERAL NOTES
9. GENERAL NOTES
10. GENERAL NOTES
11. GENERAL NOTES
12. GENERAL NOTES
13. GENERAL NOTES
14. GENERAL NOTES
15. GENERAL NOTES

19 FINISH LEGEND

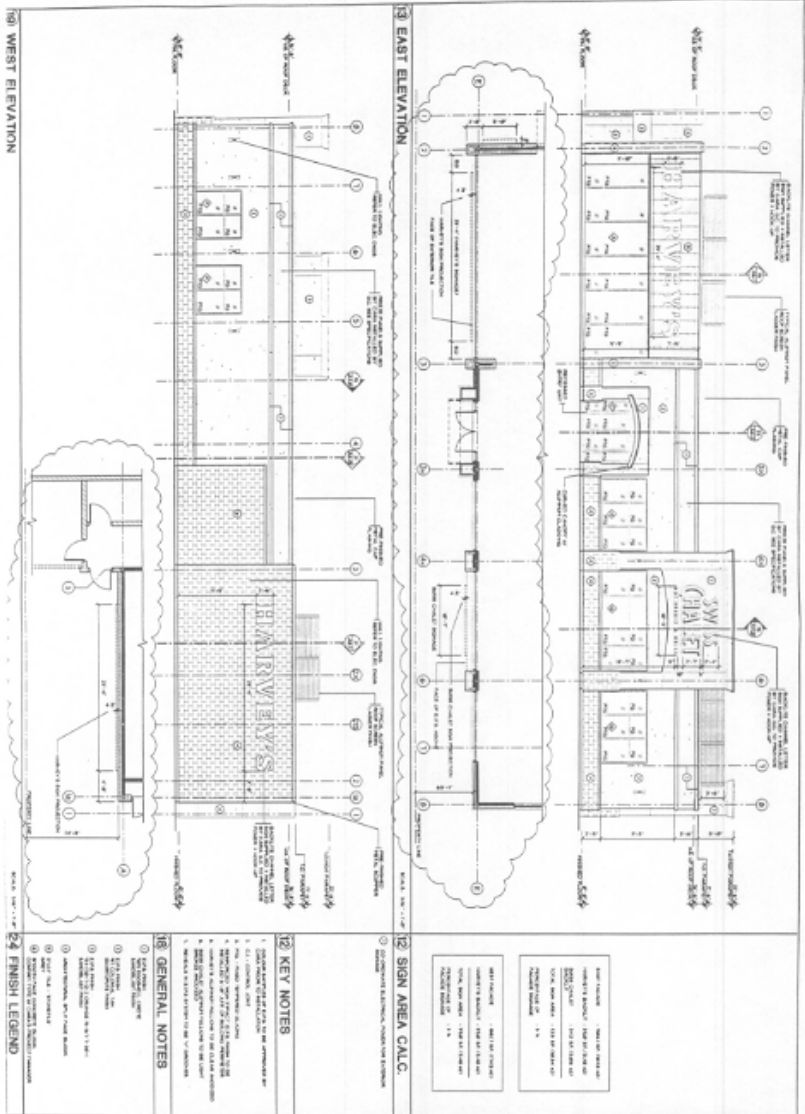
1	BRICK
2	HORIZONTAL SIDING
3	VERTICAL SIDING
4	WOOD SHAKES
5	WOOD SHAKES
6	WOOD SHAKES
7	WOOD SHAKES
8	WOOD SHAKES
9	WOOD SHAKES
10	WOOD SHAKES
11	WOOD SHAKES
12	WOOD SHAKES
13	WOOD SHAKES
14	WOOD SHAKES
15	WOOD SHAKES

SWISS CHALET HARVEY'S
 3737 RUTHERFORD ROAD
 VAUGHAN, ONTARIO

ARCHIDON CANADA INC.
 444-1111-1111

SWISS CHALET

A3.1



10 WEST ELEVATION

11 EAST ELEVATION

12 SIGN AREA CALC.

12 KEY NOTES

1. SIGN AREA CALC. TO BE APPROVED BY THE CITY OF VAUGHAN.
2. SEE SIGN AREA CALC. FOR SIGN AREA.
3. SEE SIGN AREA CALC. FOR SIGN AREA.
4. SEE SIGN AREA CALC. FOR SIGN AREA.
5. SEE SIGN AREA CALC. FOR SIGN AREA.

13 GENERAL NOTES

1. SEE SIGN AREA CALC. FOR SIGN AREA.
2. SEE SIGN AREA CALC. FOR SIGN AREA.
3. SEE SIGN AREA CALC. FOR SIGN AREA.
4. SEE SIGN AREA CALC. FOR SIGN AREA.
5. SEE SIGN AREA CALC. FOR SIGN AREA.

14 FINISH LEGEND

1	CONCRETE
2	BRICK
3	GLAZED ALUMINUM
4	GLAZED GLASS
5	GLAZED POLYCARBONATE
6	GLAZED POLYETHYLENE TEREPHTHALE
7	GLAZED POLYPROPYLENE
8	GLAZED POLYSTYRENE
9	GLAZED POLYURETHANE
10	GLAZED POLYVINYL CHLORIDE
11	GLAZED POLYETHYLENE TEREPHTHALE
12	GLAZED POLYPROPYLENE
13	GLAZED POLYSTYRENE
14	GLAZED POLYURETHANE
15	GLAZED POLYVINYL CHLORIDE

A3.0

NO.	REVISION
1	ISSUED FOR PERMITTING
2	ISSUED FOR PERMITTING
3	ISSUED FOR PERMITTING
4	ISSUED FOR PERMITTING
5	ISSUED FOR PERMITTING
6	ISSUED FOR PERMITTING
7	ISSUED FOR PERMITTING
8	ISSUED FOR PERMITTING
9	ISSUED FOR PERMITTING
10	ISSUED FOR PERMITTING
11	ISSUED FOR PERMITTING
12	ISSUED FOR PERMITTING
13	ISSUED FOR PERMITTING
14	ISSUED FOR PERMITTING
15	ISSUED FOR PERMITTING
16	ISSUED FOR PERMITTING
17	ISSUED FOR PERMITTING
18	ISSUED FOR PERMITTING
19	ISSUED FOR PERMITTING
20	ISSUED FOR PERMITTING

SWISS CHALET HARVEY'S
 3737 RUTHERFORD ROAD
 VAUGHAN, ONTARIO

ARCHICORP CANADA INC.
 ARCHITECTS

SWISS CHALET
 1000 SHEPPARD AVENUE EAST
 UNIT 100
 SCARBOROUGH, ONTARIO M1S 1T5
 TEL: (416) 291-1111
 FAX: (416) 291-1112
 WWW.SWISSCHALET.COM