

**COMMITTEE OF THE WHOLE MARCH 3, 2003**

**SIGN VARIANCE APPLICATION**

**FILE NO.:** SV.03-04

**OWNER:** GALLU CONSTRUCTION INC.

**LOCATION:** 3899 HIGHWAY #7, LOTS 5 AND 6,  
REGISTERED PLAN 65M-2339, CONCESSION 6

**Recommendation**

The Sign Variance Committee recommends:

That Sign Variance Application SV.03-04, Gallu Construction Inc., be APPROVED provided that the banners and portable ground sign be removed.

**Purpose**

Applicant is requesting to install one additional pylon sign on Highway #7.

**Background - Analysis and Options**

**By-Law Requirements (203-92, as amended)**

**“6.1(i) LIMIT ON NUMBER OF SIGNS**

Except as may otherwise be permitted in this by-law, the maximum number of signs that may be erected shall be:

One (1) ground sign per lot....

(ii) One (1) additional ground sign may be erected for a lot having a street frontage greater than 125m.

(iii) Where a lot abuts two or more streets an additional ground sign may be erected on each street frontage provided that said street has a minimum frontage of 15.0m.

6.5(b) No ground sign shall exceed 5.0m in any dimensions of the sign face.”

**Conclusion**

Applicant is requesting to install one additional pylon sign on Highway #7. The sign measures 5.08m x 1.87m, (sign face measures 9.5m<sup>2</sup>) with a readograph below the sign measuring 3.05m x 1.26m (sign face measures 3.84m<sup>2</sup>). Presently there are two existing pylon signs on Highway #7.

**Attachments**

1. Sketch of Sign

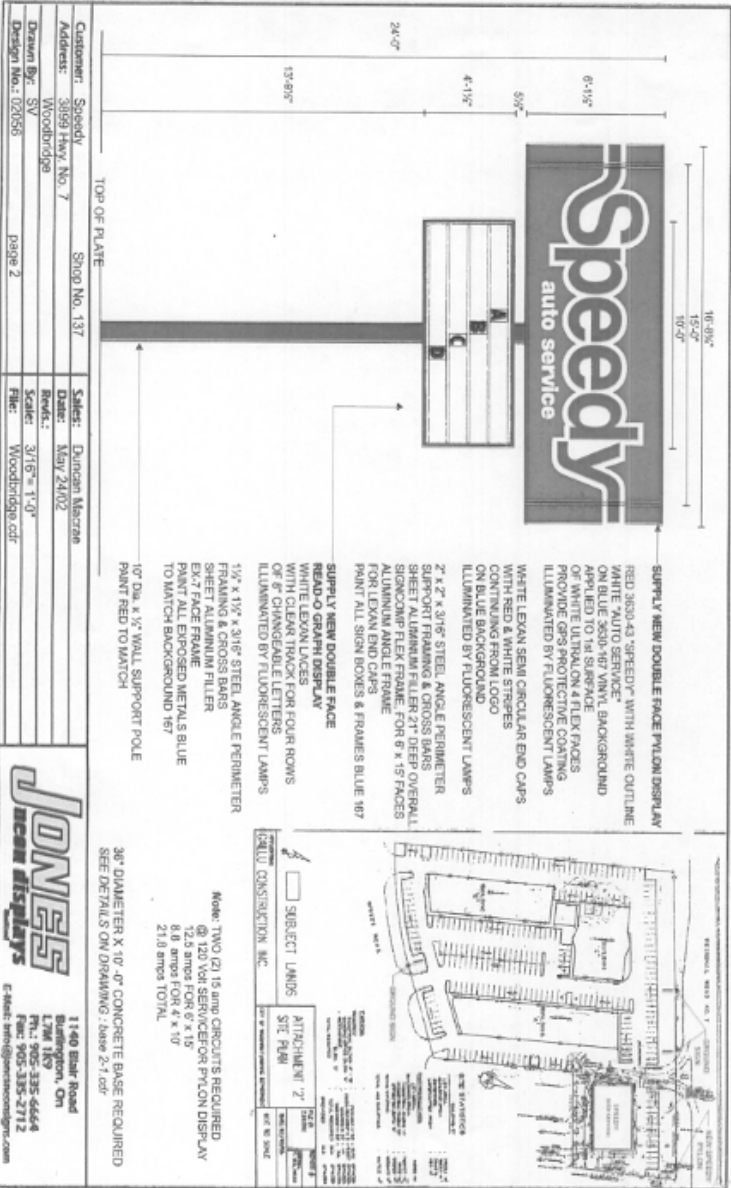
**Report prepared by:**

John Studdy, Manager of Customer & Administrative Services

Respectfully submitted,

John Studdy  
Chair, Sign Variance Committee

/pa



Customer: Speedy Shop No. 137  
 Address: 3899 Hwy No. 7 Woodbridge  
 Design By: SV  
 Design No.: 02056

Sales: Duncan Maczka  
 Date: May 24/02  
 Revs.: 3/15" - 1-0"  
 Scale: Woodbridge.cdr

1140 Blair Road  
 Burlington, ON  
 Tel: 905-335-6664  
 Fax: 905-335-2712  
 E-Mail: info@jonersdisplays.com

TOP OF PLATE

SUPPLY NEW DOUBLE FACE PYLON DISPLAY  
 RED 3630-43 "SPEEDY" WITH WHITE CUTLINE  
 WHITE "AUTO SERVICE"  
 ON BLUE 3630-87 VINYL BACKGROUND  
 OF RED TO MATCH VINYL BACKGROUND  
 OF WHITE TO MATCH VINYL BACKGROUND  
 PROVIDE GRS PROTECTIVE COATING  
 ILLUMINATED BY FLUORESCENT LAMPS  
 WHITE LEVAN SEMI CIRCULAR END CAPS  
 WITH RED & WHITE STRIPES  
 ON BLUE BACKGROUND  
 ILLUMINATED BY FLUORESCENT LAMPS  
 2' x 2' x 3/16" STEEL ANGLE PERIMETER  
 SUPPORT FRAMING & GROSS BARS OVER ALL  
 SIGN COMPONENTS  
 SECOND FLEX FRAMER ON 8' x 15' FRAMES  
 FOR LEVAN ANGLE FRAME  
 PRINT ALL SIGN BOXES & FRAMES BLUE R77  
 PRINT RED TO MATCH

36" DIAMETER X 10' 0" CONCRETE BASE REQUIRED  
 SEE DETAILS ON DRAWING: base 2-1.cdr

17 1/2" x 1 1/2" x 3/16" STEEL ANGLE PERIMETER  
 WITH LEVAN LACES  
 WITH CLEAR TRACK FOR FOUR ROWS  
 OF 8" CHANGEABLE LETTERS  
 ILLUMINATED BY FLUORESCENT LAMPS  
 SUPPLY NEW DOUBLE FACE  
 WITH LEVAN LACES  
 WITH CLEAR TRACK FOR FOUR ROWS  
 OF 8" CHANGEABLE LETTERS  
 ILLUMINATED BY FLUORESCENT LAMPS  
 SHEET ALUMINUM FILLER  
 EX-7 FACE FRAME  
 PAINT ALL EXPOSED METALS BLUE  
 TO MATCH BACKGROUND R67  
 10" DIA. X 1/2" WALL SUPPORT POLE  
 PAINT RED TO MATCH

ITEM	DESCRIPTION	QTY	UNIT	WEIGHT (LBS)
1	2' x 2' x 3/16" STEEL ANGLE PERIMETER	100	FT	100
2	2' x 2' x 3/16" STEEL ANGLE	100	FT	100
3	2' x 2' x 3/16" STEEL ANGLE	100	FT	100
4	2' x 2' x 3/16" STEEL ANGLE	100	FT	100
5	2' x 2' x 3/16" STEEL ANGLE	100	FT	100
6	2' x 2' x 3/16" STEEL ANGLE	100	FT	100
7	2' x 2' x 3/16" STEEL ANGLE	100	FT	100
8	2' x 2' x 3/16" STEEL ANGLE	100	FT	100
9	2' x 2' x 3/16" STEEL ANGLE	100	FT	100
10	2' x 2' x 3/16" STEEL ANGLE	100	FT	100

NOTE: TWO (2) 15 AMP CIRCUITS REQUIRED  
 @ 120 VOLT SERVICE FOR PYLON DISPLAY  
 8.2 amps @ 120V x 15  
 21.6 amps TOTAL

1140 Blair Road  
 Burlington, ON  
 Tel: 905-335-6664  
 Fax: 905-335-2712  
 E-Mail: info@jonersdisplays.com