

## **COMMITTEE OF THE WHOLE – FEBRUARY 2, 2004**

### **ASSUMPTION – CIPRIANO COURT (ROSEMOND) 19T-97V18/ 65M-3282**

#### **Recommendation**

The Commissioner of Engineering and Public Works recommends:

That the necessary by-law be passed assuming the municipal services in the Subdivision Agreement for Plan 65M-3282, and that the municipal services letter of credit be released.

#### **Purpose**

The Subdivision has been completed and is ready to be assumed by the City.

#### **Background - Analysis and Options**

The 24 lot development is a residential subdivision. The development is located west of Clarence Street at Thomson Creek Boulevard, as shown on Attachment 1.

The Subdivision Agreement was signed on October 19, 1998.

The municipal services in Plan 65M-3282 were installed in September 1998, and the top course asphalt was placed in June 2001.

All the documentation required by the Subdivision Agreement for assumption has been submitted. The Commissioner of Engineering and Public Works has received inspection clearance from all pertinent City Departments and the City Treasurer has confirmed that all of the City's financial requirements regarding this subdivision have been met.

#### **Relationship to Vaughan Vision 2007**

The development of this subdivision and the assumption of the municipal services is consistent with Vaughan Vision 2007, which encourages managed growth through the implementation of OPA 600 (4.7.1). OPA policies require that development take place in accordance with the requirements and standards of the City and relevant agencies.

This report is consistent with the priorities previously set by Council and the necessary resources have been allocated and approved.

#### **Conclusion**

It is therefore appropriate that the municipal services in 65M-3282 be assumed and the municipal services letter of credit be released.

#### **Attachments**

1. Location Map

#### **Report prepared by:**

Vick Renold, C.E.T. – Sr. Engineering Assistant, ext. 3150  
Robb Brown, - Municipal Services Inspection Supervisor, ext. 3140

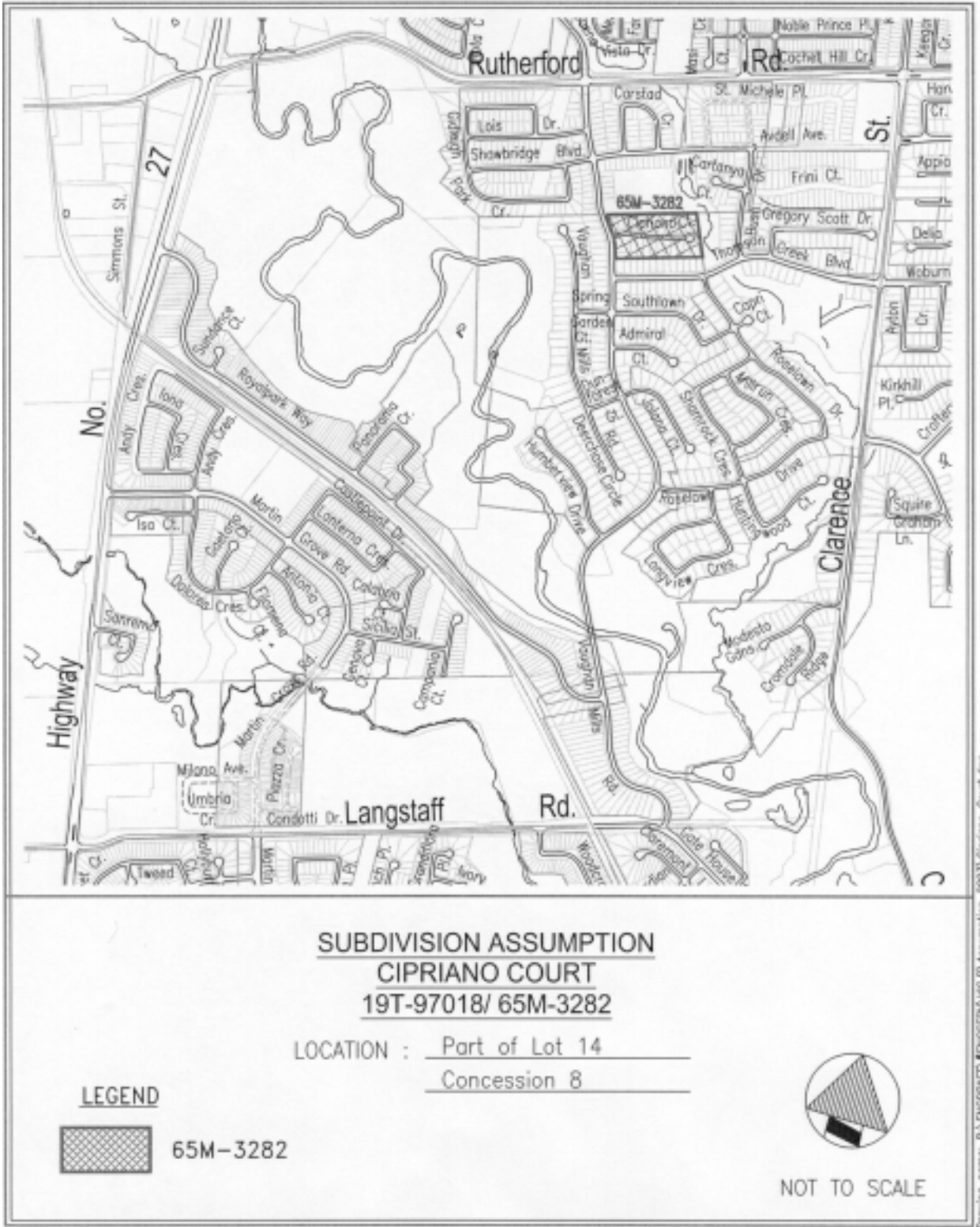
Respectfully submitted,

Bill Robinson, P. Eng.  
Commissioner of Engineering and Public Works

Gary P. Carroll, P. Eng.  
Director of Engineering Services

VR:MP


# ATTACHMENT No. 1



**SUBDIVISION ASSUMPTION  
CIPRIANO COURT  
19T-97018/ 65M-3282**

LOCATION : Part of Lot 14  
Concession 8

**LEGEND**

 65M-3282



NOT TO SCALE