

COMMITTEE OF THE WHOLE NOVEMBER 5, 2007

SIGN VARIANCE APPLICATION

FILE NO: SV.07-022
OWNER: TRINITY DEVELOPMENT GROUP INC.
LOCATION: 31 FAMOUS AVENUE
LOT 5, CONCESSION 5

Recommendation

That Sign Variance Application SV.07-022, Trinity Development Group Inc., be APPROVED.

Economic Impact

None.

Communications Plan

The results of this application will be communicated to the applicant through the Secretary to the Sign Variance Committee.

Purpose

Request to install wall signs on the north and south elevations of the building of the subject property as shown on the attached drawings.

Background - Analysis and Options

6.2 (a) Where a site plan approved by the City provides standards for signage and the signs for the development comply therewith, such signs shall be deemed to comply with this By-Law.

(The Sign By-law permits only those signs approved on the site plan agreement.)

Relationship to Vaughan Vision 2007

This report is consistent with the priorities previously set by Council and the necessary resources have been allocated and approved.

Regional Implications

Region of York Engineering approval is not required for the proposed signs.

Conclusion

The applicant is proposing to install additional wall signs on the north and south elevations of the building as shown on the attached drawings.

Members of the Sign Variance Committee have no objections to the proposed wall signs, and are of the opinion the intent and purpose of the City's Sign By-Law is being maintained.

If Council finds merit in the application, a Sign Permit issued by the Building Standards Department is required.

Attachments

1. Site Plan
2. Sketch of Sign

Report prepared by:

John Studdy, Manager of Customer & Administrative Services Ext 8232

Respectfully submitted,

John Studdy
Chair, Sign Variance Committee

/pa

CONTRACTOR'S NOTE
 The plan and design are, and all items shown hereon are, the property of the architect and cannot be reproduced without written consent. Written dimensions that have precedence over drawings shall be those shown on drawings and be responsible for all dimensions and conditions on the job. The office shall be informed of any variation from the drawings and dimensions on the drawings.

REVISIONS
 NO. DATE
 001 04/10/2009
 002 04/10/2009
 003 04/10/2009
 004 04/10/2009
 005 04/10/2009
 006 04/10/2009
 007 04/10/2009
 008 04/10/2009
 009 04/10/2009
 010 04/10/2009

ARCHITECT
Shap Architects R.P.

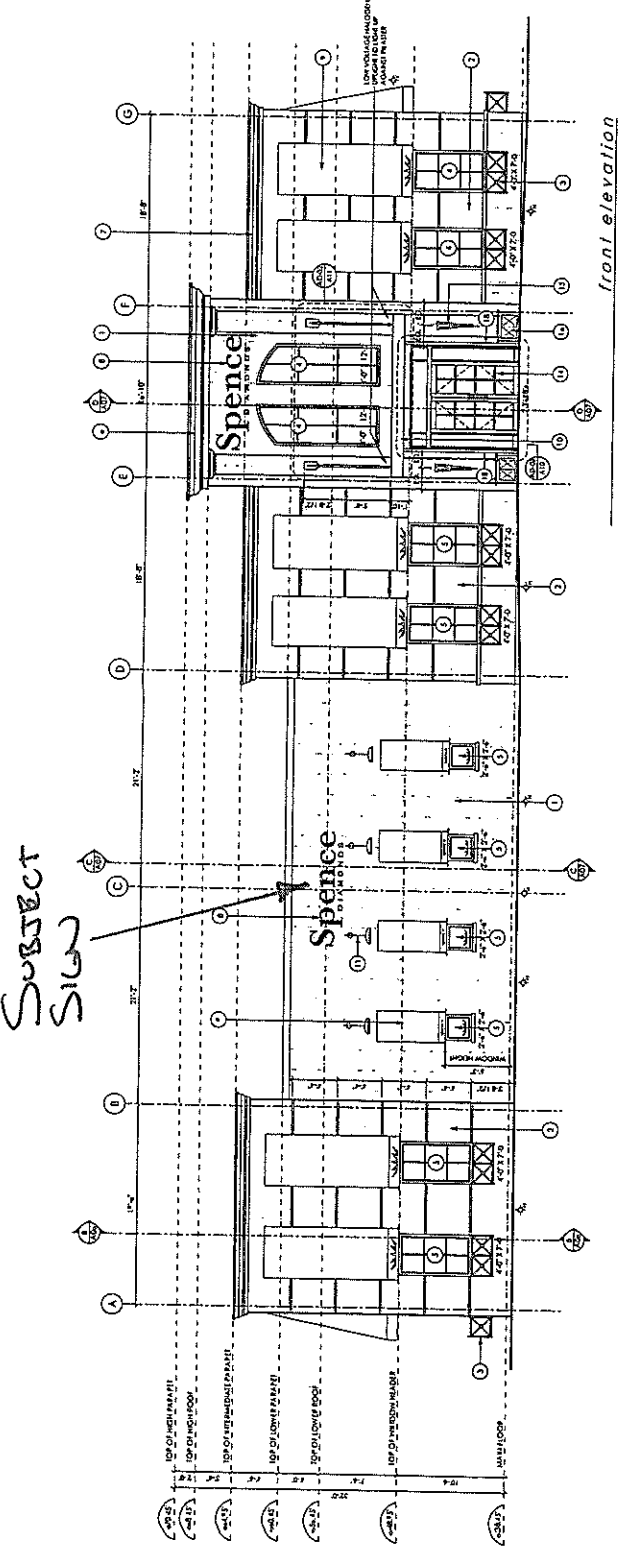
DESIGN CONSULTANT

PROJECT
 VAUGHAN, ONTARIO

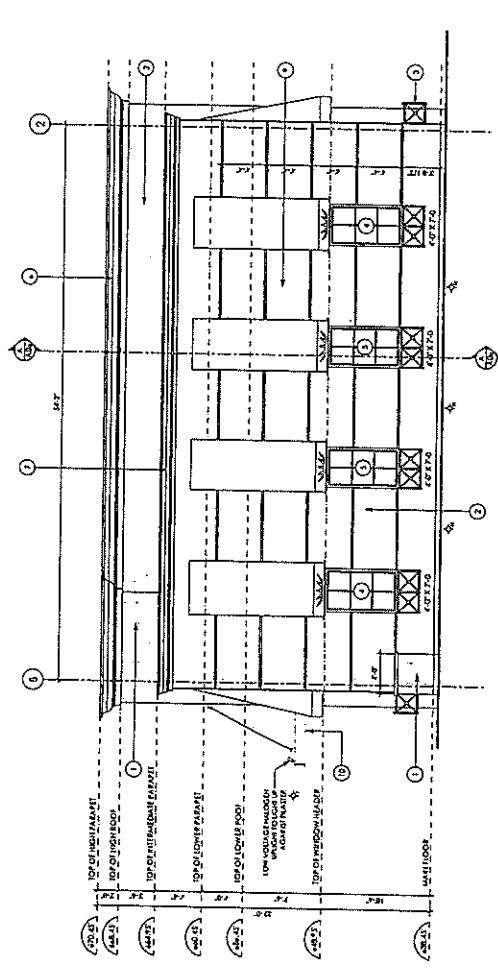
DRAWING
 ELEVATIONS

SCALE 3/16" = 1'-0"
DATE APRIL 2009
DRAWN BY C1

SHEET
 A04



front elevation



side elevation - parking lot

MATERIALS LIST

1. FINISH WALL CLADDING
2. FINISH FLOORING
3. FINISH CEILING
4. ALUMINUM WINDOW
5. INTERIOR WALL FINISH
6. PRE-FINISHED UP CORNER - PROFILE 1
7. PRE-FINISHED CORNER - PROFILE 2
8. FINISH DOOR
9. FINISH TRIM
10. FINISH TRIM - INTERIOR
11. FINISH TRIM - EXTERIOR
12. FINISH TRIM - ROOFLINE
13. FINISH TRIM - ROOFLINE - ALUMINUM
14. ALUMINUM ROOFLINE TRIM
15. ALUMINUM ROOFLINE TRIM - INTERIOR
16. ALUMINUM ROOFLINE TRIM - EXTERIOR
17. ALUMINUM ROOFLINE TRIM - ROOFLINE
18. FINISH TRIM - ROOFLINE

EXTERIOR LIGHTING SCHEDULE

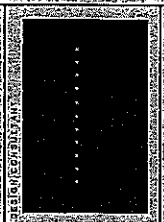
1. ROOM LIGHTING
2. ROOM LIGHTING
3. ROOM LIGHTING
4. ROOM LIGHTING
5. ROOM LIGHTING
6. ROOM LIGHTING
7. ROOM LIGHTING
8. ROOM LIGHTING
9. ROOM LIGHTING
10. ROOM LIGHTING
11. ROOM LIGHTING
12. ROOM LIGHTING
13. ROOM LIGHTING
14. ROOM LIGHTING
15. ROOM LIGHTING
16. ROOM LIGHTING
17. ROOM LIGHTING
18. ROOM LIGHTING

Subject
Sign

concept drawings
The plan and elevations are the property of the architect and cannot be used or reproduced without written consent. While the architect is not responsible for all dimensions and details, the architect shall be deemed to be responsible for the dimensions and conditions on the drawing.

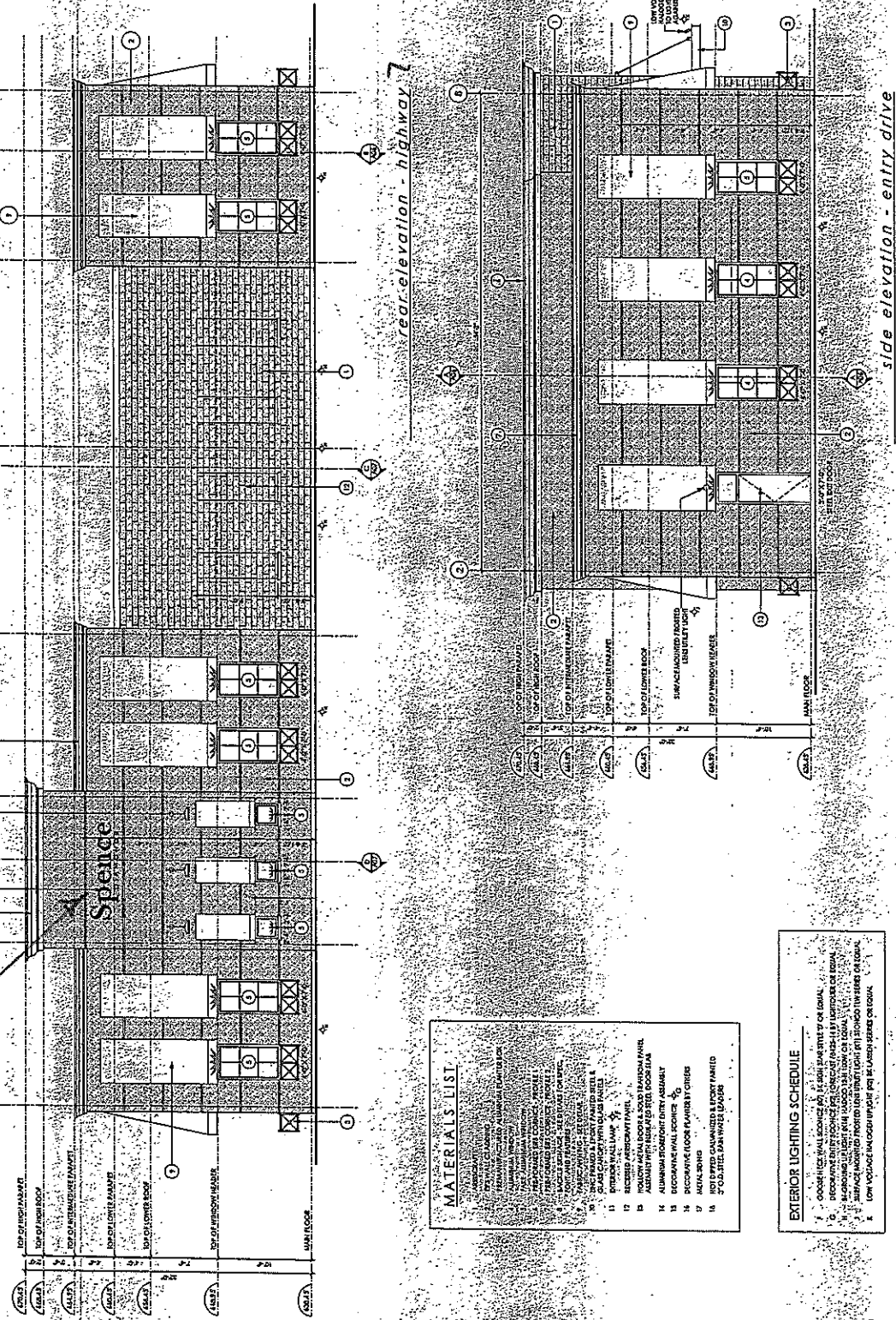
REVISIONS
NO. DESCRIPTION
DATE
BY

ARCHITECT
Shap
ARCHITECTS
1000 SHEPPARD AVENUE EAST
SUITE 200
VAUGHAN, ONTARIO



DATE: APRIL 2006
SHEET: A05
DRAWING: ELEVATIONS

SCALE: 3/16" = 1'-0"
DATE: APRIL 2006
SHEET: A05
DRAWING: ELEVATIONS



MATERIALS LIST

1. BRICK
2. BRICK
3. BRICK
4. BRICK
5. BRICK
6. BRICK
7. BRICK
8. BRICK
9. BRICK
10. BRICK
11. BRICK
12. BRICK
13. BRICK
14. BRICK
15. BRICK
16. BRICK
17. BRICK
18. BRICK
19. BRICK
20. BRICK
21. BRICK
22. BRICK
23. BRICK
24. BRICK
25. BRICK
26. BRICK
27. BRICK
28. BRICK
29. BRICK
30. BRICK
31. BRICK
32. BRICK
33. BRICK
34. BRICK
35. BRICK
36. BRICK
37. BRICK
38. BRICK
39. BRICK
40. BRICK
41. BRICK
42. BRICK
43. BRICK
44. BRICK
45. BRICK
46. BRICK
47. BRICK
48. BRICK
49. BRICK
50. BRICK
51. BRICK
52. BRICK
53. BRICK
54. BRICK
55. BRICK
56. BRICK
57. BRICK
58. BRICK
59. BRICK
60. BRICK
61. BRICK
62. BRICK
63. BRICK
64. BRICK
65. BRICK
66. BRICK
67. BRICK
68. BRICK
69. BRICK
70. BRICK
71. BRICK
72. BRICK
73. BRICK
74. BRICK
75. BRICK
76. BRICK
77. BRICK
78. BRICK
79. BRICK
80. BRICK
81. BRICK
82. BRICK
83. BRICK
84. BRICK
85. BRICK
86. BRICK
87. BRICK
88. BRICK
89. BRICK
90. BRICK
91. BRICK
92. BRICK
93. BRICK
94. BRICK
95. BRICK
96. BRICK
97. BRICK
98. BRICK
99. BRICK
100. BRICK

EXTERIOR LIGHTING SCHEDULE

1. LOW VOLTAGE LED DOWNLIGHT
2. LOW VOLTAGE LED DOWNLIGHT
3. LOW VOLTAGE LED DOWNLIGHT
4. LOW VOLTAGE LED DOWNLIGHT
5. LOW VOLTAGE LED DOWNLIGHT
6. LOW VOLTAGE LED DOWNLIGHT
7. LOW VOLTAGE LED DOWNLIGHT
8. LOW VOLTAGE LED DOWNLIGHT
9. LOW VOLTAGE LED DOWNLIGHT
10. LOW VOLTAGE LED DOWNLIGHT
11. LOW VOLTAGE LED DOWNLIGHT
12. LOW VOLTAGE LED DOWNLIGHT
13. LOW VOLTAGE LED DOWNLIGHT
14. LOW VOLTAGE LED DOWNLIGHT
15. LOW VOLTAGE LED DOWNLIGHT
16. LOW VOLTAGE LED DOWNLIGHT
17. LOW VOLTAGE LED DOWNLIGHT
18. LOW VOLTAGE LED DOWNLIGHT
19. LOW VOLTAGE LED DOWNLIGHT
20. LOW VOLTAGE LED DOWNLIGHT
21. LOW VOLTAGE LED DOWNLIGHT
22. LOW VOLTAGE LED DOWNLIGHT
23. LOW VOLTAGE LED DOWNLIGHT
24. LOW VOLTAGE LED DOWNLIGHT
25. LOW VOLTAGE LED DOWNLIGHT
26. LOW VOLTAGE LED DOWNLIGHT
27. LOW VOLTAGE LED DOWNLIGHT
28. LOW VOLTAGE LED DOWNLIGHT
29. LOW VOLTAGE LED DOWNLIGHT
30. LOW VOLTAGE LED DOWNLIGHT
31. LOW VOLTAGE LED DOWNLIGHT
32. LOW VOLTAGE LED DOWNLIGHT
33. LOW VOLTAGE LED DOWNLIGHT
34. LOW VOLTAGE LED DOWNLIGHT
35. LOW VOLTAGE LED DOWNLIGHT
36. LOW VOLTAGE LED DOWNLIGHT
37. LOW VOLTAGE LED DOWNLIGHT
38. LOW VOLTAGE LED DOWNLIGHT
39. LOW VOLTAGE LED DOWNLIGHT
40. LOW VOLTAGE LED DOWNLIGHT
41. LOW VOLTAGE LED DOWNLIGHT
42. LOW VOLTAGE LED DOWNLIGHT
43. LOW VOLTAGE LED DOWNLIGHT
44. LOW VOLTAGE LED DOWNLIGHT
45. LOW VOLTAGE LED DOWNLIGHT
46. LOW VOLTAGE LED DOWNLIGHT
47. LOW VOLTAGE LED DOWNLIGHT
48. LOW VOLTAGE LED DOWNLIGHT
49. LOW VOLTAGE LED DOWNLIGHT
50. LOW VOLTAGE LED DOWNLIGHT
51. LOW VOLTAGE LED DOWNLIGHT
52. LOW VOLTAGE LED DOWNLIGHT
53. LOW VOLTAGE LED DOWNLIGHT
54. LOW VOLTAGE LED DOWNLIGHT
55. LOW VOLTAGE LED DOWNLIGHT
56. LOW VOLTAGE LED DOWNLIGHT
57. LOW VOLTAGE LED DOWNLIGHT
58. LOW VOLTAGE LED DOWNLIGHT
59. LOW VOLTAGE LED DOWNLIGHT
60. LOW VOLTAGE LED DOWNLIGHT
61. LOW VOLTAGE LED DOWNLIGHT
62. LOW VOLTAGE LED DOWNLIGHT
63. LOW VOLTAGE LED DOWNLIGHT
64. LOW VOLTAGE LED DOWNLIGHT
65. LOW VOLTAGE LED DOWNLIGHT
66. LOW VOLTAGE LED DOWNLIGHT
67. LOW VOLTAGE LED DOWNLIGHT
68. LOW VOLTAGE LED DOWNLIGHT
69. LOW VOLTAGE LED DOWNLIGHT
70. LOW VOLTAGE LED DOWNLIGHT
71. LOW VOLTAGE LED DOWNLIGHT
72. LOW VOLTAGE LED DOWNLIGHT
73. LOW VOLTAGE LED DOWNLIGHT
74. LOW VOLTAGE LED DOWNLIGHT
75. LOW VOLTAGE LED DOWNLIGHT
76. LOW VOLTAGE LED DOWNLIGHT
77. LOW VOLTAGE LED DOWNLIGHT
78. LOW VOLTAGE LED DOWNLIGHT
79. LOW VOLTAGE LED DOWNLIGHT
80. LOW VOLTAGE LED DOWNLIGHT
81. LOW VOLTAGE LED DOWNLIGHT
82. LOW VOLTAGE LED DOWNLIGHT
83. LOW VOLTAGE LED DOWNLIGHT
84. LOW VOLTAGE LED DOWNLIGHT
85. LOW VOLTAGE LED DOWNLIGHT
86. LOW VOLTAGE LED DOWNLIGHT
87. LOW VOLTAGE LED DOWNLIGHT
88. LOW VOLTAGE LED DOWNLIGHT
89. LOW VOLTAGE LED DOWNLIGHT
90. LOW VOLTAGE LED DOWNLIGHT
91. LOW VOLTAGE LED DOWNLIGHT
92. LOW VOLTAGE LED DOWNLIGHT
93. LOW VOLTAGE LED DOWNLIGHT
94. LOW VOLTAGE LED DOWNLIGHT
95. LOW VOLTAGE LED DOWNLIGHT
96. LOW VOLTAGE LED DOWNLIGHT
97. LOW VOLTAGE LED DOWNLIGHT
98. LOW VOLTAGE LED DOWNLIGHT
99. LOW VOLTAGE LED DOWNLIGHT
100. LOW VOLTAGE LED DOWNLIGHT