

SIGN VARIANCE APPLICATION
FILE NO: SV.11-031
OWNER: PINEVIEW AUTO SALES
LOCATION: 3790 HIGHWAY 7
LOT 6, CONCESSION 6
WARD 3

Recommendation

The Sign Variance Committee recommends:

That Sign Variance Application SV.11-031, Pineview Auto Sales, be APPROVED subject to the removal of the existing steel structure along Weston Road..

Contribution to Sustainability

N/A

Economic Impact

None.

Communications Plan

The results of this application will be communicated to the applicant through the Secretary to the Sign Variance Committee.

Purpose

Request to alter existing two pylon signs with a height of 8 meters and less than 1 meter to property lines and driveways on the subject property as shown on the attached drawings.

Background - Analysis and Options

Sign Bylaw Requirements (By-Law 203-92, as amended):

6.2 (a) Where a site plan approved by the City provides standards for signage and the signs for the development comply therewith, such signs shall be deemed to comply with this By-Law.

Noting the above, where the property is regulated by a site plan agreement approved by the City, only those wall signs and pylon signs approved under the site plan agreement are deemed to be permitted by the City's Sign By-Law.

6.5 (a) Ground signs shall be set back a minimum of 1.0m from all street lines.

6.5 (d) No ground sign shall exceed a maximum height of 7.5m from finished grade level at the base of the supporting structure of the said sign.

6.5 (f) A ground sign including any part of its structure shall not be located closer than 1.0m to any driveway.

Relationship to Vaughan Vision 2020/Strategic Plan

This report is consistent with the priorities previously set by Council and the necessary resources have been allocated and approved.

Regional Implications

Region of York Engineering approval is required for the proposed signs.

Conclusion

The applicant has applied to the Committee to allow for the alteration of two existing pylon signs as shown on the attached drawings. The alterations are associated with the re-branding of an existing automobile dealership. Sign permits were issued several years ago for the two existing pylon signs and Building/Sign Permits were never issued for the existing steel structure along Weston Road.

The members of the Sign Variance Committee have reviewed the application and have no objections to the variance application subject to the existing steel structure and associated signage located along Weston Road being removed. In Committee's opinion the intent and purpose of the Sign By-law is being maintained.

If Council finds merit in the application, a Sign Permit issued by the Building Standards Department is required.

Attachments

1. Site Plan
2. Proposed Sign along Highway No 7
3. Proposed Sign along Weston Road

Report prepared by:

John Studdy, Manager of Customer & Administrative Services Ext 8232

Respectfully submitted,

John Studdy
Chair, Sign Variance Committee

/as

Pine View
 Hyundai
 3790 Hwy. #7
 Vaughan, Ont

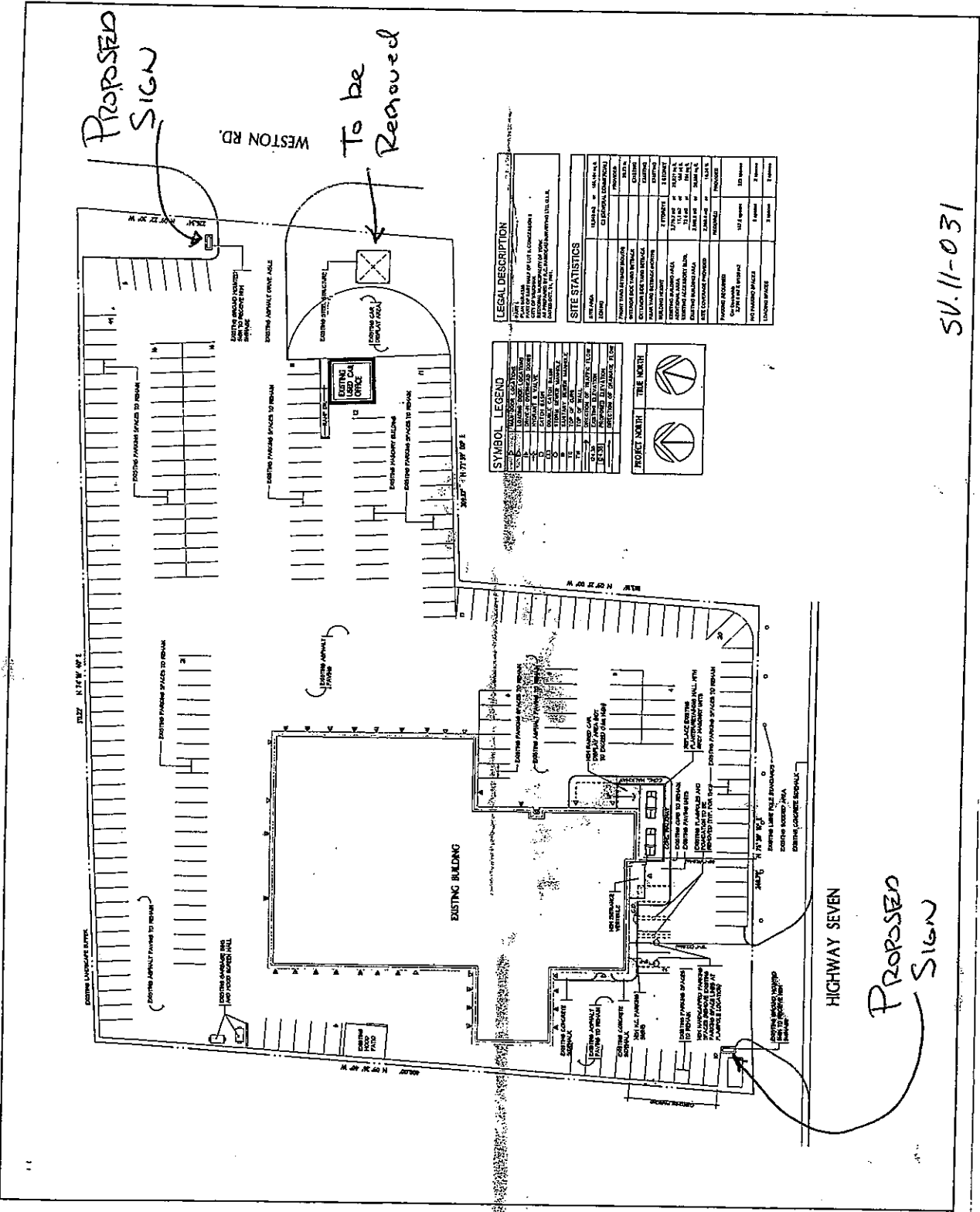


A. BALDASSARRA
 Architect Inc.

7800 Bess Street, Suite 200
 Concord, Ontario, L4K 6K6
 Tel: (905) 442-7278



SV-11-031



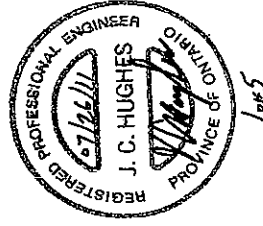
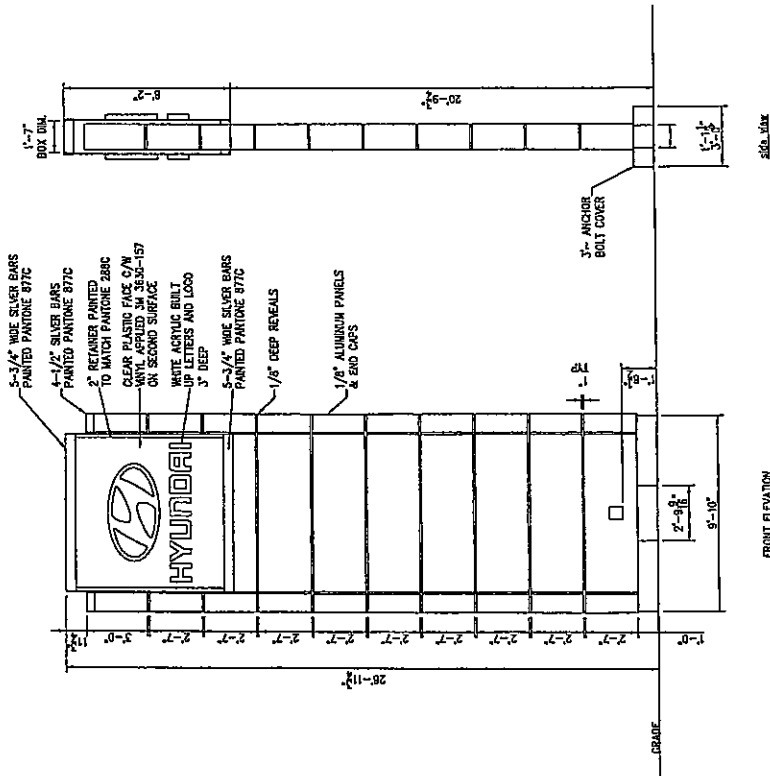
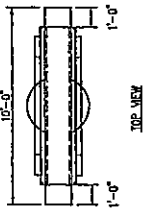
LEGAL DESCRIPTION	
PART OF LOTS 1, 2, 3, 4, 5, 6, 7, 8, 9, 10, 11, 12, 13, 14, 15, 16, 17, 18, 19, 20, 21, 22, 23, 24, 25, 26, 27, 28, 29, 30, 31, 32, 33, 34, 35, 36, 37, 38, 39, 40, 41, 42, 43, 44, 45, 46, 47, 48, 49, 50, 51, 52, 53, 54, 55, 56, 57, 58, 59, 60, 61, 62, 63, 64, 65, 66, 67, 68, 69, 70, 71, 72, 73, 74, 75, 76, 77, 78, 79, 80, 81, 82, 83, 84, 85, 86, 87, 88, 89, 90, 91, 92, 93, 94, 95, 96, 97, 98, 99, 100, 101, 102, 103, 104, 105, 106, 107, 108, 109, 110, 111, 112, 113, 114, 115, 116, 117, 118, 119, 120, 121, 122, 123, 124, 125, 126, 127, 128, 129, 130, 131, 132, 133, 134, 135, 136, 137, 138, 139, 140, 141, 142, 143, 144, 145, 146, 147, 148, 149, 150, 151, 152, 153, 154, 155, 156, 157, 158, 159, 160, 161, 162, 163, 164, 165, 166, 167, 168, 169, 170, 171, 172, 173, 174, 175, 176, 177, 178, 179, 180, 181, 182, 183, 184, 185, 186, 187, 188, 189, 190, 191, 192, 193, 194, 195, 196, 197, 198, 199, 200, 201, 202, 203, 204, 205, 206, 207, 208, 209, 210, 211, 212, 213, 214, 215, 216, 217, 218, 219, 220, 221, 222, 223, 224, 225, 226, 227, 228, 229, 230, 231, 232, 233, 234, 235, 236, 237, 238, 239, 240, 241, 242, 243, 244, 245, 246, 247, 248, 249, 250, 251, 252, 253, 254, 255, 256, 257, 258, 259, 260, 261, 262, 263, 264, 265, 266, 267, 268, 269, 270, 271, 272, 273, 274, 275, 276, 277, 278, 279, 280, 281, 282, 283, 284, 285, 286, 287, 288, 289, 290, 291, 292, 293, 294, 295, 296, 297, 298, 299, 300, 301, 302, 303, 304, 305, 306, 307, 308, 309, 310, 311, 312, 313, 314, 315, 316, 317, 318, 319, 320, 321, 322, 323, 324, 325, 326, 327, 328, 329, 330, 331, 332, 333, 334, 335, 336, 337, 338, 339, 340, 341, 342, 343, 344, 345, 346, 347, 348, 349, 350, 351, 352, 353, 354, 355, 356, 357, 358, 359, 360, 361, 362, 363, 364, 365, 366, 367, 368, 369, 370, 371, 372, 373, 374, 375, 376, 377, 378, 379, 380, 381, 382, 383, 384, 385, 386, 387, 388, 389, 390, 391, 392, 393, 394, 395, 396, 397, 398, 399, 400, 401, 402, 403, 404, 405, 406, 407, 408, 409, 410, 411, 412, 413, 414, 415, 416, 417, 418, 419, 420, 421, 422, 423, 424, 425, 426, 427, 428, 429, 430, 431, 432, 433, 434, 435, 436, 437, 438, 439, 440, 441, 442, 443, 444, 445, 446, 447, 448, 449, 450, 451, 452, 453, 454, 455, 456, 457, 458, 459, 460, 461, 462, 463, 464, 465, 466, 467, 468, 469, 470, 471, 472, 473, 474, 475, 476, 477, 478, 479, 480, 481, 482, 483, 484, 485, 486, 487, 488, 489, 490, 491, 492, 493, 494, 495, 496, 497, 498, 499, 500, 501, 502, 503, 504, 505, 506, 507, 508, 509, 510, 511, 512, 513, 514, 515, 516, 517, 518, 519, 520, 521, 522, 523, 524, 525, 526, 527, 528, 529, 530, 531, 532, 533, 534, 535, 536, 537, 538, 539, 540, 541, 542, 543, 544, 545, 546, 547, 548, 549, 550, 551, 552, 553, 554, 555, 556, 557, 558, 559, 560, 561, 562, 563, 564, 565, 566, 567, 568, 569, 570, 571, 572, 573, 574, 575, 576, 577, 578, 579, 580, 581, 582, 583, 584, 585, 586, 587, 588, 589, 590, 591, 592, 593, 594, 595, 596, 597, 598, 599, 600, 601, 602, 603, 604, 605, 606, 607, 608, 609, 610, 611, 612, 613, 614, 615, 616, 617, 618, 619, 620, 621, 622, 623, 624, 625, 626, 627, 628, 629, 630, 631, 632, 633, 634, 635, 636, 637, 638, 639, 640, 641, 642, 643, 644, 645, 646, 647, 648, 649, 650, 651, 652, 653, 654, 655, 656, 657, 658, 659, 660, 661, 662, 663, 664, 665, 666, 667, 668, 669, 670, 671, 672, 673, 674, 675, 676, 677, 678, 679, 680, 681, 682, 683, 684, 685, 686, 687, 688, 689, 690, 691, 692, 693, 694, 695, 696, 697, 698, 699, 700, 701, 702, 703, 704, 705, 706, 707, 708, 709, 710, 711, 712, 713, 714, 715, 716, 717, 718, 719, 720, 721, 722, 723, 724, 725, 726, 727, 728, 729, 730, 731, 732, 733, 734, 735, 736, 737, 738, 739, 740, 741, 742, 743, 744, 745, 746, 747, 748, 749, 750, 751, 752, 753, 754, 755, 756, 757, 758, 759, 760, 761, 762, 763, 764, 765, 766, 767, 768, 769, 770, 771, 772, 773, 774, 775, 776, 777, 778, 779, 780, 781, 782, 783, 784, 785, 786, 787, 788, 789, 790, 791, 792, 793, 794, 795, 796, 797, 798, 799, 800, 801, 802, 803, 804, 805, 806, 807, 808, 809, 810, 811, 812, 813, 814, 815, 816, 817, 818, 819, 820, 821, 822, 823, 824, 825, 826, 827, 828, 829, 830, 831, 832, 833, 834, 835, 836, 837, 838, 839, 840, 841, 842, 843, 844, 845, 846, 847, 848, 849, 850, 851, 852, 853, 854, 855, 856, 857, 858, 859, 860, 861, 862, 863, 864, 865, 866, 867, 868, 869, 870, 871, 872, 873, 874, 875, 876, 877, 878, 879, 880, 881, 882, 883, 884, 885, 886, 887, 888, 889, 890, 891, 892, 893, 894, 895, 896, 897, 898, 899, 900, 901, 902, 903, 904, 905, 906, 907, 908, 909, 910, 911, 912, 913, 914, 915, 916, 917, 918, 919, 920, 921, 922, 923, 924, 925, 926, 927, 928, 929, 930, 931, 932, 933, 934, 935, 936, 937, 938, 939, 940, 941, 942, 943, 944, 945, 946, 947, 948, 949, 950, 951, 952, 953, 954, 955, 956, 957, 958, 959, 960, 961, 962, 963, 964, 965, 966, 967, 968, 969, 970, 971, 972, 973, 974, 975, 976, 977, 978, 979, 980, 981, 982, 983, 984, 985, 986, 987, 988, 989, 990, 991, 992, 993, 994, 995, 996, 997, 998, 999, 1000.	

SYMBOL LEGEND	
1	EXISTING ASPHALT PAVING TO REMAIN
2	EXISTING DRIVE CHAIN OFFICE
3	EXISTING DRIVE CHAIN OFFICE (REMOVED)
4	EXISTING DRIVE CHAIN OFFICE
5	EXISTING DRIVE CHAIN OFFICE (REMOVED)
6	EXISTING DRIVE CHAIN OFFICE
7	EXISTING DRIVE CHAIN OFFICE (REMOVED)
8	EXISTING DRIVE CHAIN OFFICE
9	EXISTING DRIVE CHAIN OFFICE (REMOVED)
10	EXISTING DRIVE CHAIN OFFICE
11	EXISTING DRIVE CHAIN OFFICE (REMOVED)
12	EXISTING DRIVE CHAIN OFFICE
13	EXISTING DRIVE CHAIN OFFICE (REMOVED)
14	EXISTING DRIVE CHAIN OFFICE
15	EXISTING DRIVE CHAIN OFFICE (REMOVED)
16	EXISTING DRIVE CHAIN OFFICE
17	EXISTING DRIVE CHAIN OFFICE (REMOVED)
18	EXISTING DRIVE CHAIN OFFICE
19	EXISTING DRIVE CHAIN OFFICE (REMOVED)
20	EXISTING DRIVE CHAIN OFFICE
21	EXISTING DRIVE CHAIN OFFICE (REMOVED)
22	EXISTING DRIVE CHAIN OFFICE
23	EXISTING DRIVE CHAIN OFFICE (REMOVED)
24	EXISTING DRIVE CHAIN OFFICE
25	EXISTING DRIVE CHAIN OFFICE (REMOVED)
26	EXISTING DRIVE CHAIN OFFICE
27	EXISTING DRIVE CHAIN OFFICE (REMOVED)
28	EXISTING DRIVE CHAIN OFFICE
29	EXISTING DRIVE CHAIN OFFICE (REMOVED)
30	EXISTING DRIVE CHAIN OFFICE
31	EXISTING DRIVE CHAIN OFFICE (REMOVED)
32	EXISTING DRIVE CHAIN OFFICE
33	EXISTING DRIVE CHAIN OFFICE (REMOVED)
34	EXISTING DRIVE CHAIN OFFICE
35	EXISTING DRIVE CHAIN OFFICE (REMOVED)
36	EXISTING DRIVE CHAIN OFFICE
37	EXISTING DRIVE CHAIN OFFICE (REMOVED)
38	EXISTING DRIVE CHAIN OFFICE
39	EXISTING DRIVE CHAIN OFFICE (REMOVED)
40	EXISTING DRIVE CHAIN OFFICE
41	EXISTING DRIVE CHAIN OFFICE (REMOVED)
42	EXISTING DRIVE CHAIN OFFICE
43	EXISTING DRIVE CHAIN OFFICE (REMOVED)
44	EXISTING DRIVE CHAIN OFFICE
45	EXISTING DRIVE CHAIN OFFICE (REMOVED)
46	EXISTING DRIVE CHAIN OFFICE
47	EXISTING DRIVE CHAIN OFFICE (REMOVED)
48	EXISTING DRIVE CHAIN OFFICE
49	EXISTING DRIVE CHAIN OFFICE (REMOVED)
50	EXISTING DRIVE CHAIN OFFICE
51	EXISTING DRIVE CHAIN OFFICE (REMOVED)
52	EXISTING DRIVE CHAIN OFFICE
53	EXISTING DRIVE CHAIN OFFICE (REMOVED)
54	EXISTING DRIVE CHAIN OFFICE
55	EXISTING DRIVE CHAIN OFFICE (REMOVED)
56	EXISTING DRIVE CHAIN OFFICE
57	EXISTING DRIVE CHAIN OFFICE (REMOVED)
58	EXISTING DRIVE CHAIN OFFICE
59	EXISTING DRIVE CHAIN OFFICE (REMOVED)
60	EXISTING DRIVE CHAIN OFFICE
61	EXISTING DRIVE CHAIN OFFICE (REMOVED)
62	EXISTING DRIVE CHAIN OFFICE
63	EXISTING DRIVE CHAIN OFFICE (REMOVED)
64	EXISTING DRIVE CHAIN OFFICE
65	EXISTING DRIVE CHAIN OFFICE (REMOVED)
66	EXISTING DRIVE CHAIN OFFICE
67	EXISTING DRIVE CHAIN OFFICE (REMOVED)
68	EXISTING DRIVE CHAIN OFFICE
69	EXISTING DRIVE CHAIN OFFICE (REMOVED)
70	EXISTING DRIVE CHAIN OFFICE
71	EXISTING DRIVE CHAIN OFFICE (REMOVED)
72	EXISTING DRIVE CHAIN OFFICE
73	EXISTING DRIVE CHAIN OFFICE (REMOVED)
74	EXISTING DRIVE CHAIN OFFICE
75	EXISTING DRIVE CHAIN OFFICE (REMOVED)
76	EXISTING DRIVE CHAIN OFFICE
77	EXISTING DRIVE CHAIN OFFICE (REMOVED)
78	EXISTING DRIVE CHAIN OFFICE
79	EXISTING DRIVE CHAIN OFFICE (REMOVED)
80	EXISTING DRIVE CHAIN OFFICE
81	EXISTING DRIVE CHAIN OFFICE (REMOVED)
82	EXISTING DRIVE CHAIN OFFICE
83	EXISTING DRIVE CHAIN OFFICE (REMOVED)
84	EXISTING DRIVE CHAIN OFFICE
85	EXISTING DRIVE CHAIN OFFICE (REMOVED)
86	EXISTING DRIVE CHAIN OFFICE
87	EXISTING DRIVE CHAIN OFFICE (REMOVED)
88	EXISTING DRIVE CHAIN OFFICE
89	EXISTING DRIVE CHAIN OFFICE (REMOVED)
90	EXISTING DRIVE CHAIN OFFICE
91	EXISTING DRIVE CHAIN OFFICE (REMOVED)
92	EXISTING DRIVE CHAIN OFFICE
93	EXISTING DRIVE CHAIN OFFICE (REMOVED)
94	EXISTING DRIVE CHAIN OFFICE
95	EXISTING DRIVE CHAIN OFFICE (REMOVED)
96	EXISTING DRIVE CHAIN OFFICE
97	EXISTING DRIVE CHAIN OFFICE (REMOVED)
98	EXISTING DRIVE CHAIN OFFICE
99	EXISTING DRIVE CHAIN OFFICE (REMOVED)
100	EXISTING DRIVE CHAIN OFFICE

SV-11-031

HIGHWAY SEVEN

Proposed SIGN



PROPOSAL - PINE VIEW AUTO - PYLON 1 - HWY 7 (FRONT SIDE OF BUILDING)

WO: #
Project: PINE VIEW AUTO
Title: OUTDOOR SIGNAGE ARTWORK
Drawing #:

Scale: As shown
File Name: Proposal-Pine View Auto.indd
Drawn By: AD
Date: JUNE, 2011

Revision #:
Date of Revision:
Date of Approval:

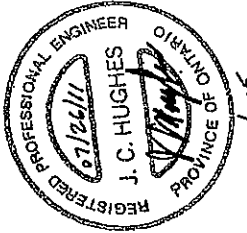
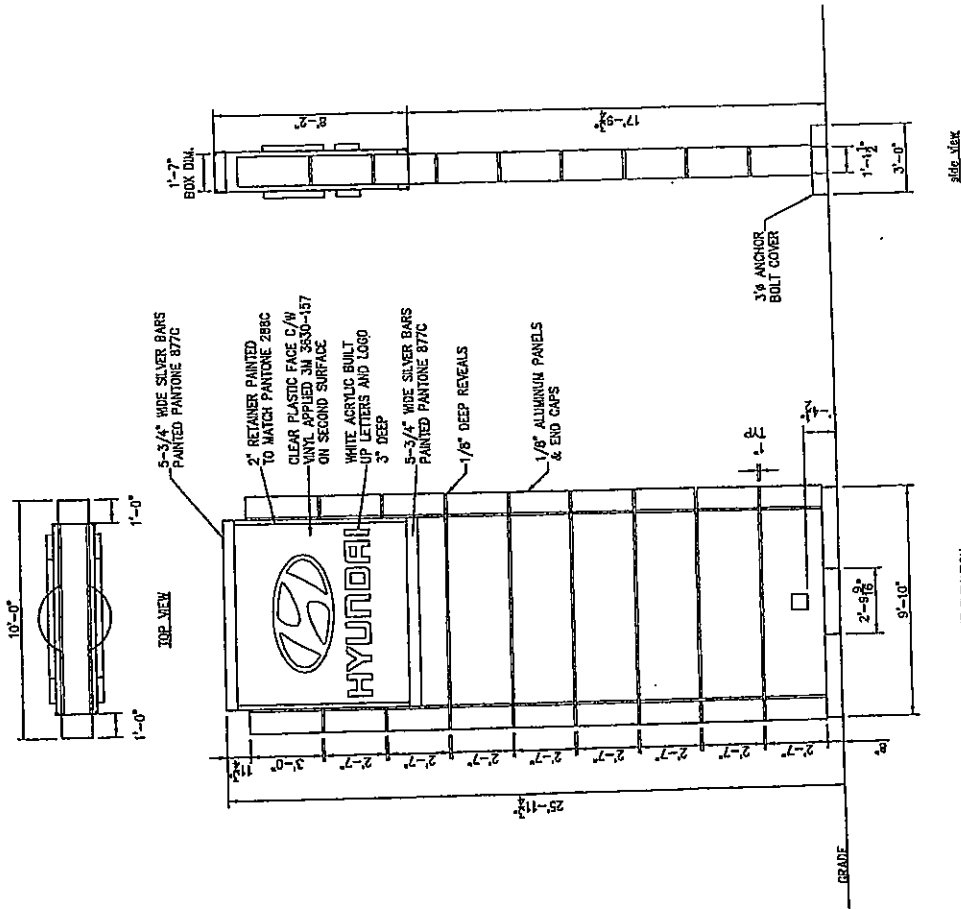
This drawing is the property of TWILIGHT SIGNS & NEON INC. Any reproduction or use without written permission from an officer of TWILIGHT is unlawful. Violators will be prosecuted to the full extent of the law.

Tel: (905) 857-3565 Web: www.twilightsigns.com
30 MacEwan Dr W, Bolton, Ontario, L7E 2V6

SU.11-031



SU-11-031



1 of 5

PROPOSAL - PINE VIEW AUTO - PYLON 2- WESTON ROAD

WO: #
 Project: PINE VIEW AUTO
 Title: OUTDOOR SIGNAGE ARTWORK
 Drawing #:

Scale: As shown
 File Name: Proposal-Pine View Auto.indd
 Drawn By: AD
 Date: JUNE, 2011

Revision #:
 Date of Revision:
 Date of Approval:

SU-11-031

Tel: (905) 857-9558 Web: www.twilightsigns.com
 30 McCowan Dr W, Bolton, Ontario, L7E 2V6



This drawing is the property of TWILIGHT SIGNS & NEON INC. Any reproduction or use without written permission from an officer of TWILIGHT is unlawful. Violators will be prosecuted to the full extent of the law.