

COMMITTEE OF THE WHOLE JUNE 16, 2008

SIGN VARIANCE APPLICATION

FILE NO: SV.08-011

OWNER: GALCAT INVESTMENTS INC.

LOCATION: 200 GALCAT DRIVE, LOT 2, CONCESSION 6

Recommendation

The Sign Variance Committee recommends:

That Sign Variance Application SV.08-011, Galcat Investments Inc., be APPROVED.

Economic Impact

None.

Communications Plan

The results of this application will be communicated to the applicant through the Secretary to the Sign Variance Committee.

Purpose

Request to install an additional wall sign on the west elevation of the building face of the subject property as shown on the attached drawings.

Background - Analysis and Options

6.2 (a) Where a site plan approved by the City provides standards for signage and the signs for the development comply therewith, such signs shall be deemed to comply with this By-Law.

Relationship to Vaughan Vision 2020

This report is consistent with the priorities previously set by Council and the necessary resources have been allocated and approved.

Regional Implications

Region of York Engineering approval is not required for the proposed signs.

Conclusion

The By-law permits only those wall signs approved on the site plan agreement. The applicant is proposing to install an additional wall sign on the west elevation of the building face as shown on the attached drawings. Upon approval of the sign variance by Council a Sign Permit issued by the Building Standards Department is required.

Attachments

1. Site Plan
2. Elevations
3. Sketch of Signs

Report prepared by:

John Studdy, Manager of Customer & Administrative Services Ext 8232

Respectfully submitted,

John Studdy
Chair, Sign Variance Committee

/pa

IIS IS SCHEDULE 'A' TO AGREEMENT.
 SPECIFIC DETAILS REFER TO LARGE SCALE
 WINGS DEPOSITED WITH THE CITY OF VAUGHAN BUILDING DEPARTMENT.

P1 Roll-O-Vert - 1
 P2 COAST PANEL - 2
 P3 SACELS - 2

GENERAL NOTES:

1. REFER TO SCHEDULE 'A' TO AGREEMENT FOR GENERAL NOTES.
2. REFER TO SCHEDULE 'A' TO AGREEMENT FOR MATERIALS AND FINISHES.
3. REFER TO SCHEDULE 'A' TO AGREEMENT FOR CONSTRUCTION METHODS.
4. REFER TO SCHEDULE 'A' TO AGREEMENT FOR PERFORMANCE CRITERIA.

SECTIONAL DETAILS:

- 1. WINDOW DETAIL
- 2. DOOR DETAIL
- 3. ROOF DETAIL
- 4. WALL DETAIL
- 5. FLOOR DETAIL
- 6. CEILING DETAIL
- 7. STAIR DETAIL
- 8. ELEVATOR DETAIL
- 9. MECHANICAL DETAIL
- 10. ELECTRICAL DETAIL
- 11. PLUMBING DETAIL
- 12. FIRE DETAIL
- 13. GLASS DETAIL
- 14. METAL DETAIL
- 15. WOOD DETAIL
- 16. CONCRETE DETAIL
- 17. BRICK DETAIL
- 18. STONE DETAIL
- 19. TERRAZZO DETAIL
- 20. CARPET DETAIL
- 21. PAINT DETAIL
- 22. GROUT DETAIL
- 23. ANCHOR DETAIL
- 24. FASTENER DETAIL
- 25. JOINT DETAIL
- 26. SEALANT DETAIL
- 27. INSULATION DETAIL
- 28. VENT DETAIL
- 29. DRAIN DETAIL
- 30. RISER DETAIL
- 31. BALCONY DETAIL
- 32. TERRACE DETAIL
- 33. ROOF GARDEN DETAIL
- 34. GREEN ROOF DETAIL
- 35. RAINWATER DETAIL
- 36. SOLAR DETAIL
- 37. WIND DETAIL
- 38. SOUND DETAIL
- 39. LIGHT DETAIL
- 40. HEAT DETAIL
- 41. COOL DETAIL
- 42. VENTILATION DETAIL
- 43. AIR DETAIL
- 44. WATER DETAIL
- 45. GAS DETAIL
- 46. OIL DETAIL
- 47. FUEL DETAIL
- 48. POWER DETAIL
- 49. COMMUNICATION DETAIL
- 50. SECURITY DETAIL
- 51. ACCESS DETAIL
- 52. EGRESS DETAIL
- 53. SIGNAGE DETAIL
- 54. LANDSCAPE DETAIL
- 55. SITE DETAIL
- 56. UTILITY DETAIL
- 57. FOUNDATION DETAIL
- 58. STRUCTURE DETAIL
- 59. ENVELOPE DETAIL
- 60. INTERIOR DETAIL
- 61. EXTERIOR DETAIL
- 62. CLIMATE DETAIL
- 63. ENVIRONMENT DETAIL
- 64. SUSTAINABILITY DETAIL
- 65. WELLNESS DETAIL
- 66. PRODUCTIVITY DETAIL
- 67. COMFORT DETAIL
- 68. HEALTH DETAIL
- 69. SAFETY DETAIL
- 70. SECURITY DETAIL
- 71. RESILIENCE DETAIL
- 72. ADAPTABILITY DETAIL
- 73. FLEXIBILITY DETAIL
- 74. SCALABILITY DETAIL
- 75. INNOVATION DETAIL
- 76. LEARNING DETAIL
- 77. COLLABORATION DETAIL
- 78. COMMUNITY DETAIL
- 79. CULTURE DETAIL
- 80. IDENTITY DETAIL
- 81. IMAGE DETAIL
- 82. REPUTATION DETAIL
- 83. BRAND DETAIL
- 84. MESSAGE DETAIL
- 85. VOICE DETAIL
- 86. VISUAL DETAIL
- 87. TACTILE DETAIL
- 88. AUDIBLE DETAIL
- 89. OLFACORY DETAIL
- 90. GUSTATORY DETAIL
- 91. KINAESTHETIC DETAIL
- 92. COGNITIVE DETAIL
- 93. EMOTIONAL DETAIL
- 94. SOCIAL DETAIL
- 95. CULTURAL DETAIL
- 96. HISTORICAL DETAIL
- 97. CONTEMPORARY DETAIL
- 98. FUTURE DETAIL
- 99. UNKNOWABLE DETAIL
- 100. POSSIBLE DETAIL

LEGEND:

- 1. WINDOW DETAIL
- 2. DOOR DETAIL
- 3. ROOF DETAIL
- 4. WALL DETAIL
- 5. FLOOR DETAIL
- 6. CEILING DETAIL
- 7. STAIR DETAIL
- 8. ELEVATOR DETAIL
- 9. MECHANICAL DETAIL
- 10. ELECTRICAL DETAIL
- 11. PLUMBING DETAIL
- 12. FIRE DETAIL
- 13. GLASS DETAIL
- 14. METAL DETAIL
- 15. WOOD DETAIL
- 16. CONCRETE DETAIL
- 17. BRICK DETAIL
- 18. STONE DETAIL
- 19. TERRAZZO DETAIL
- 20. CARPET DETAIL
- 21. PAINT DETAIL
- 22. GROUT DETAIL
- 23. ANCHOR DETAIL
- 24. FASTENER DETAIL
- 25. JOINT DETAIL
- 26. SEALANT DETAIL
- 27. INSULATION DETAIL
- 28. VENT DETAIL
- 29. DRAIN DETAIL
- 30. RISER DETAIL
- 31. BALCONY DETAIL
- 32. TERRACE DETAIL
- 33. ROOF GARDEN DETAIL
- 34. GREEN ROOF DETAIL
- 35. RAINWATER DETAIL
- 36. SOLAR DETAIL
- 37. WIND DETAIL
- 38. SOUND DETAIL
- 39. LIGHT DETAIL
- 40. HEAT DETAIL
- 41. COOL DETAIL
- 42. VENTILATION DETAIL
- 43. AIR DETAIL
- 44. WATER DETAIL
- 45. GAS DETAIL
- 46. OIL DETAIL
- 47. FUEL DETAIL
- 48. POWER DETAIL
- 49. COMMUNICATION DETAIL
- 50. SECURITY DETAIL
- 51. ACCESS DETAIL
- 52. EGRESS DETAIL
- 53. SIGNAGE DETAIL
- 54. LANDSCAPE DETAIL
- 55. SITE DETAIL
- 56. UTILITY DETAIL
- 57. FOUNDATION DETAIL
- 58. STRUCTURE DETAIL
- 59. ENVELOPE DETAIL
- 60. INTERIOR DETAIL
- 61. EXTERIOR DETAIL
- 62. CLIMATE DETAIL
- 63. ENVIRONMENT DETAIL
- 64. SUSTAINABILITY DETAIL
- 65. WELLNESS DETAIL
- 66. PRODUCTIVITY DETAIL
- 67. COMFORT DETAIL
- 68. HEALTH DETAIL
- 69. SAFETY DETAIL
- 70. SECURITY DETAIL
- 71. RESILIENCE DETAIL
- 72. ADAPTABILITY DETAIL
- 73. FLEXIBILITY DETAIL
- 74. SCALABILITY DETAIL
- 75. INNOVATION DETAIL
- 76. LEARNING DETAIL
- 77. COLLABORATION DETAIL
- 78. COMMUNITY DETAIL
- 79. CULTURE DETAIL
- 80. IDENTITY DETAIL
- 81. IMAGE DETAIL
- 82. REPUTATION DETAIL
- 83. BRAND DETAIL
- 84. MESSAGE DETAIL
- 85. VOICE DETAIL
- 86. VISUAL DETAIL
- 87. TACTILE DETAIL
- 88. AUDIBLE DETAIL
- 89. OLFACORY DETAIL
- 90. GUSTATORY DETAIL
- 91. KINAESTHETIC DETAIL
- 92. COGNITIVE DETAIL
- 93. EMOTIONAL DETAIL
- 94. SOCIAL DETAIL
- 95. CULTURAL DETAIL
- 96. HISTORICAL DETAIL
- 97. CONTEMPORARY DETAIL
- 98. FUTURE DETAIL
- 99. UNKNOWABLE DETAIL
- 100. POSSIBLE DETAIL

DATE: 10/10/2010

SCALE: 1/8" = 1'-0"

PROJECT: IIS SCHEDULE 'A' TO AGREEMENT

CLIENT: CITY OF VAUGHAN

ARCHITECT: A.R.G. ARCHITECTS

ENGINEER: CALCEP INVESTMENTS INC.

DATE: 10/10/2010

SCALE: 1/8" = 1'-0"

PROJECT: IIS SCHEDULE 'A' TO AGREEMENT

CLIENT: CITY OF VAUGHAN


ARCHITECT: A.R.G. ARCHITECTS


ENGINEER: CALCEP INVESTMENTS INC.

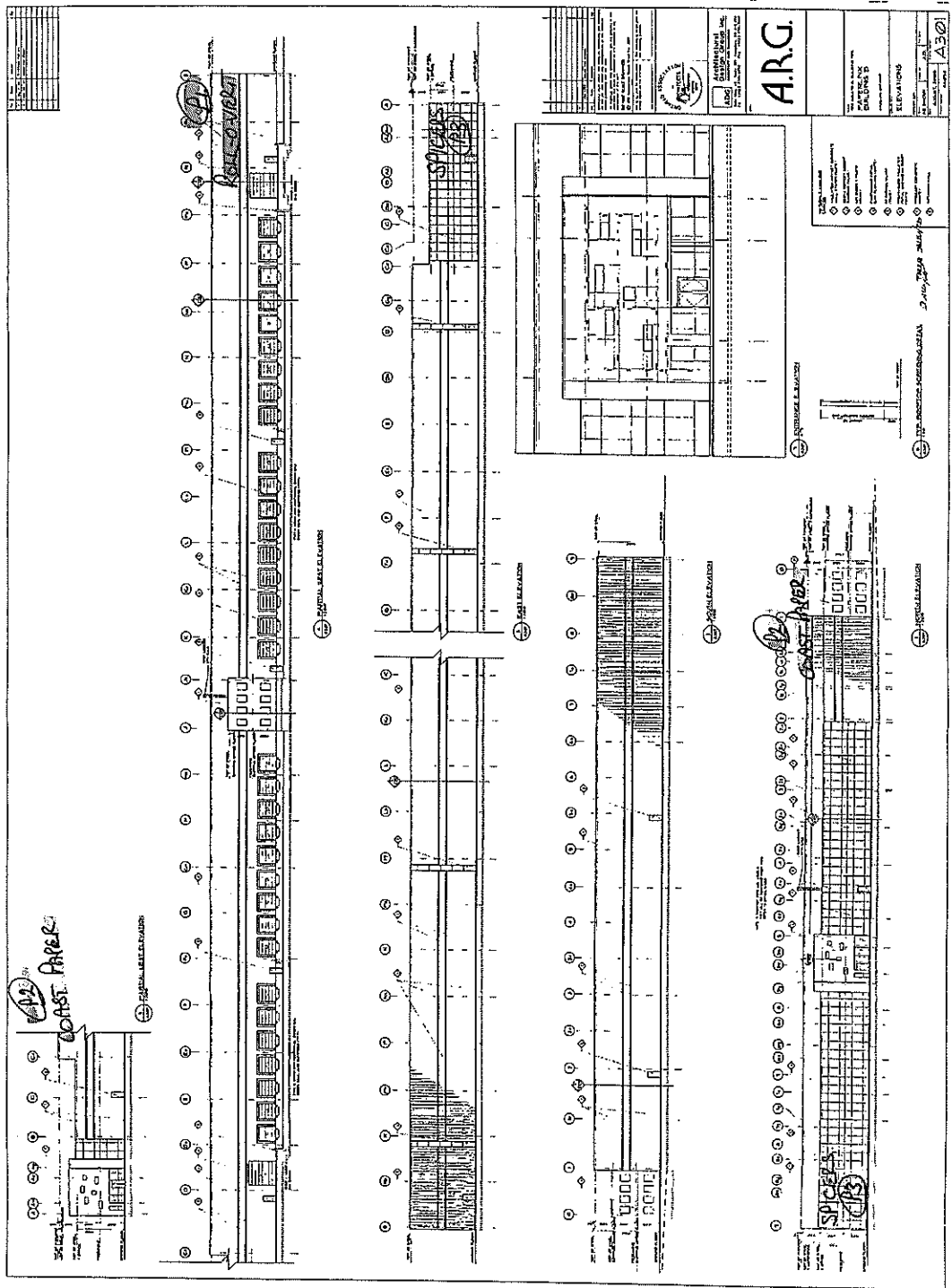
THIS IS SCHEDULE 'B2' TO AGREEMENT.

FOR SPECIFIC DETAILS REFER TO LARGE SCALE DRAWINGS DEPOSITED WITH THE CITY OF VAUGHAN BUILDING DEPARTMENT.

P1  FULL-OVERLAP

P2  COAST PAPER

P3  SPICERS - 2





P I

NO 2 SIGNS
ON SAME WALL
CLOSE MAYBE ?

LETTERS 24" X 16" INCHES

LOGO 96" X 72" INCHES



P2

OVERALL
60" HIGH X 216" LONG

54" INCH LOGO
24" INCH LETTERS

